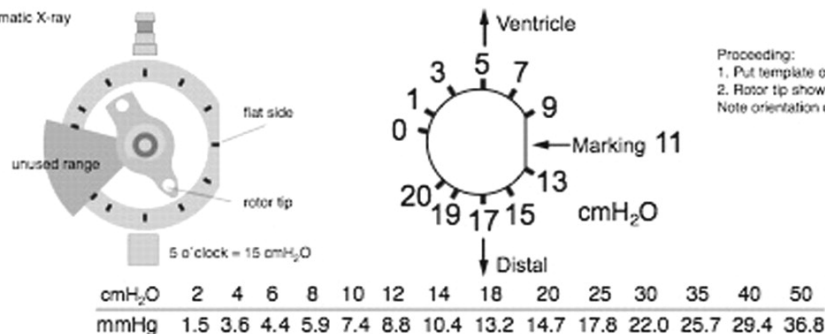


A

schematic X-ray

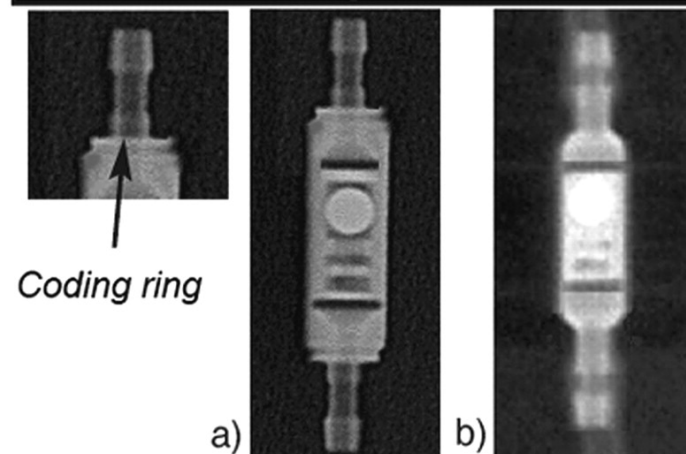


B

Proceeding:

1. Put template over the radiograph
 2. Rotor tip shows the opening pressure
- Note orientation of flat side!

Opening pressure for vertical posture	Coding of gravitational unit
10 cmH ₂ O	small, no ring
15 cmH ₂ O	large, no ring
20 cmH ₂ O	large, 1 ring
25 cmH ₂ O	large, 2 rings
30 cmH ₂ O	large, 3 rings
35 cmH ₂ O	large, 4 rings



- a) large, 2 rings = 25 cmH₂O,
b) small = 10 cmH₂O

C